

SEMINAR: ENERGY TRANSFORMATION IN ARGENTINA'S TRANSPORT AND ITS CHALLENGES

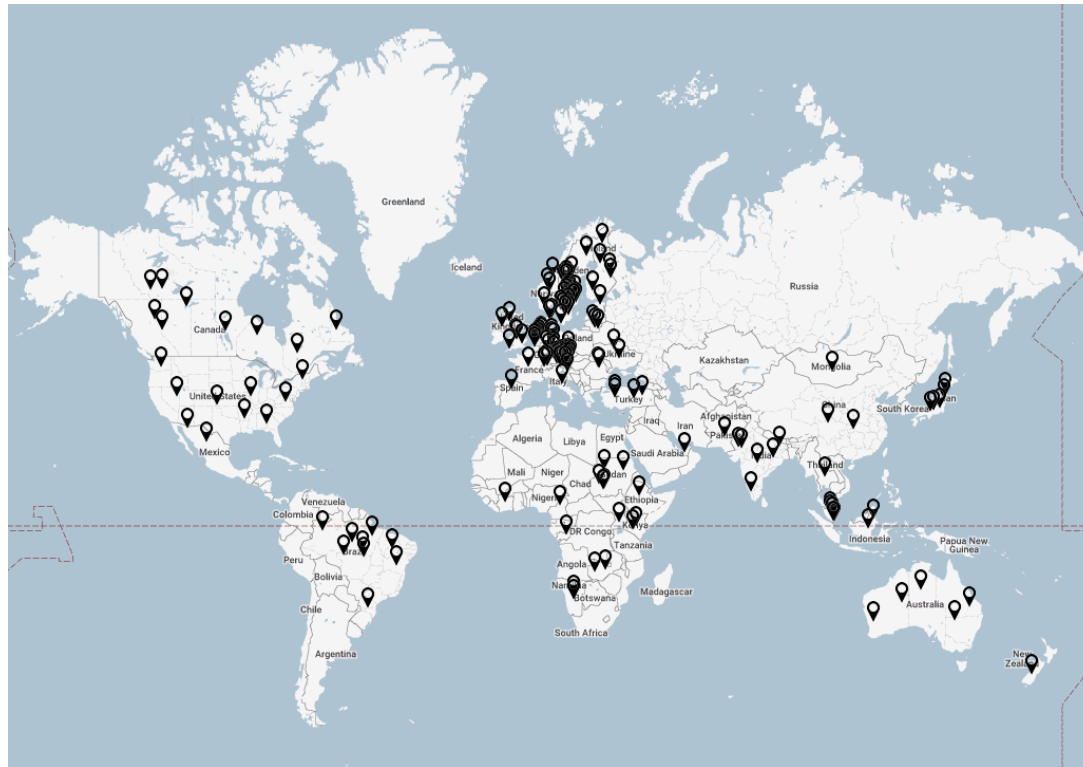
Bharadwaj Kummamuru
Executive Director
World Bioenergy Association



**WORLD BIOENERGY
ASSOCIATION**



World Bioenergy Association



- Promote the increasing utilization of sustainable bioenergy on a global level and to support the business environment for bioenergy
- Membership of more than 250 companies, associations, researchers from 65 countries
- Activities include publications, Events, Collaborations

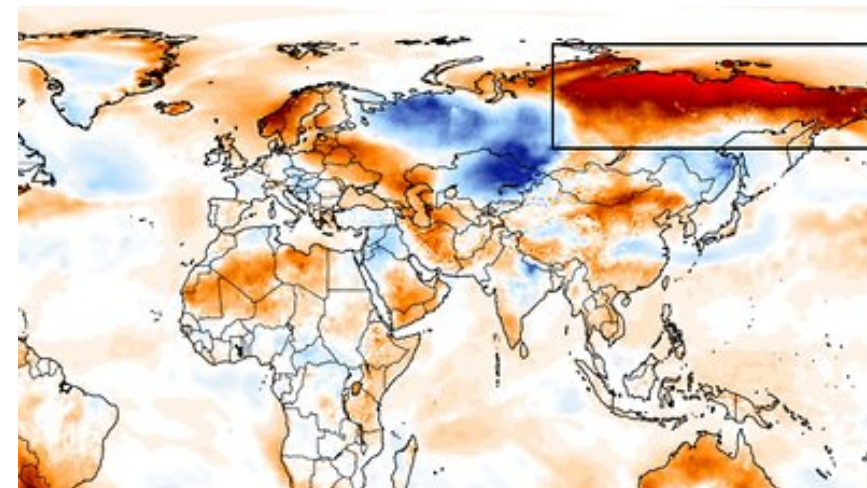


Climate change

- World is already seeing consequences of 1 degree warming through extreme weather, rising sea levels and diminishing ice
- According to IPCC, Net emissions should fall by 45% by 2030 and net zero by 2050.
- “... use of biomass can be higher ... due to potential to replace fossil fuels across all sectors (high confidence)...”



IPCC Special report 1.5 degrees. Source: IPCC



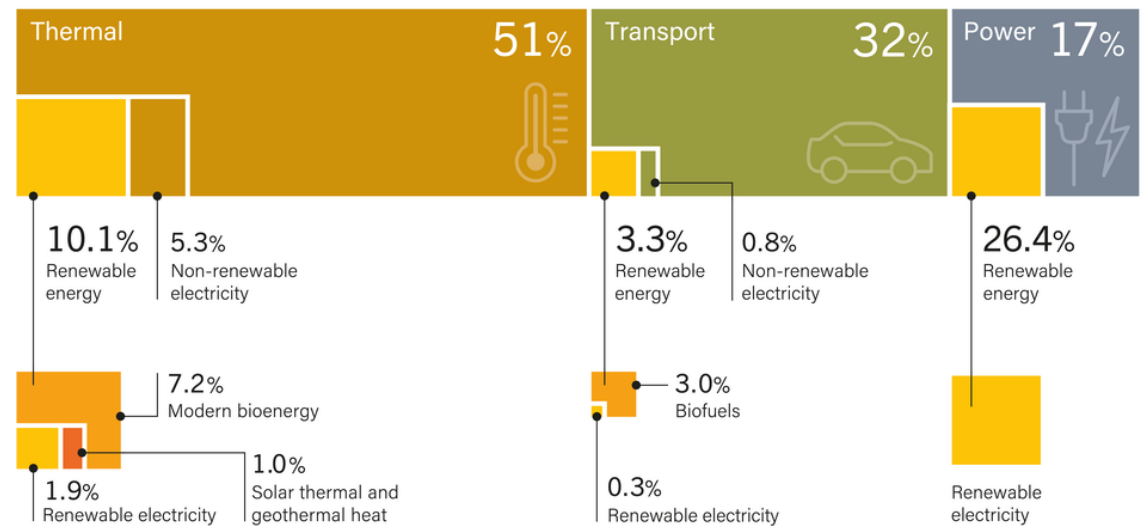
Siberian town records highest temperature ever. Source: ClimateAnalyzer.org



Tracking Renewable Progress

- Renewables have a total share of 14% in final energy mix
- Transport is the end use with the lowest renewable energy share.
- The share of renewables in transport is about 3 – 3.5% globally

Renewable Share of Total Final Energy Consumption, by Final Energy Use, 2017



Note: Data should not be compared with previous years because of revisions due to improved or adjusted methodology.

Source: Based on IEA data.

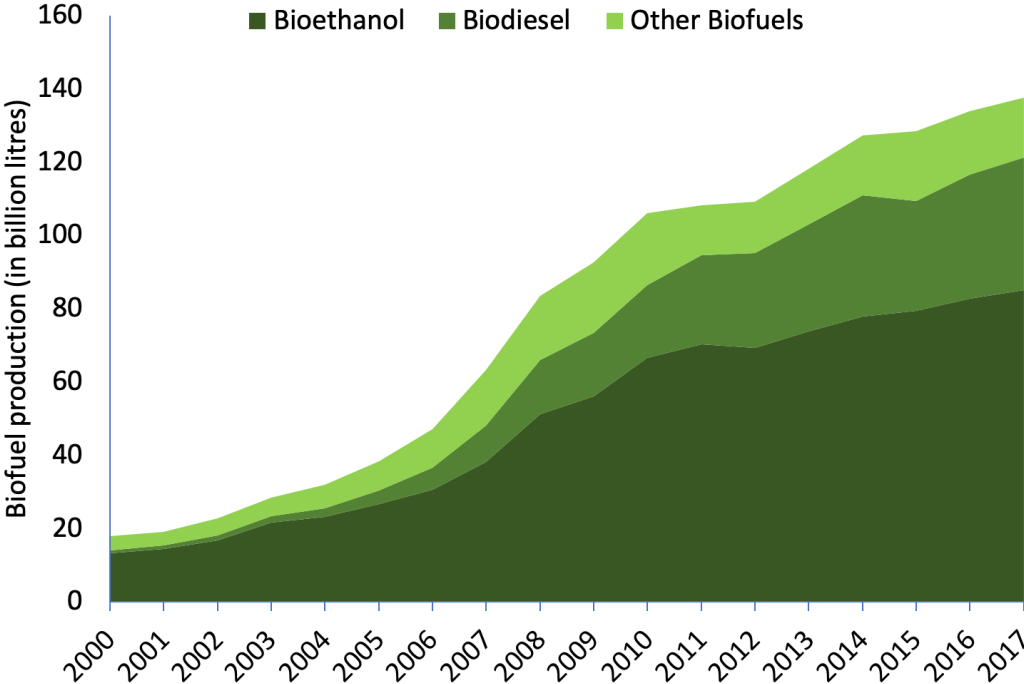
REN21 RENEWABLES 2020 GLOBAL STATUS REPORT

Share of renewables in end use sectors. Source: REN21



Biofuels

- More than 150 billion litres produced annually – predominantly in Americas
- Majority of renewables in transport is **policy driven biofuels (92%)**
- **Biofuels mandate** established in more than 70 countries worldwide



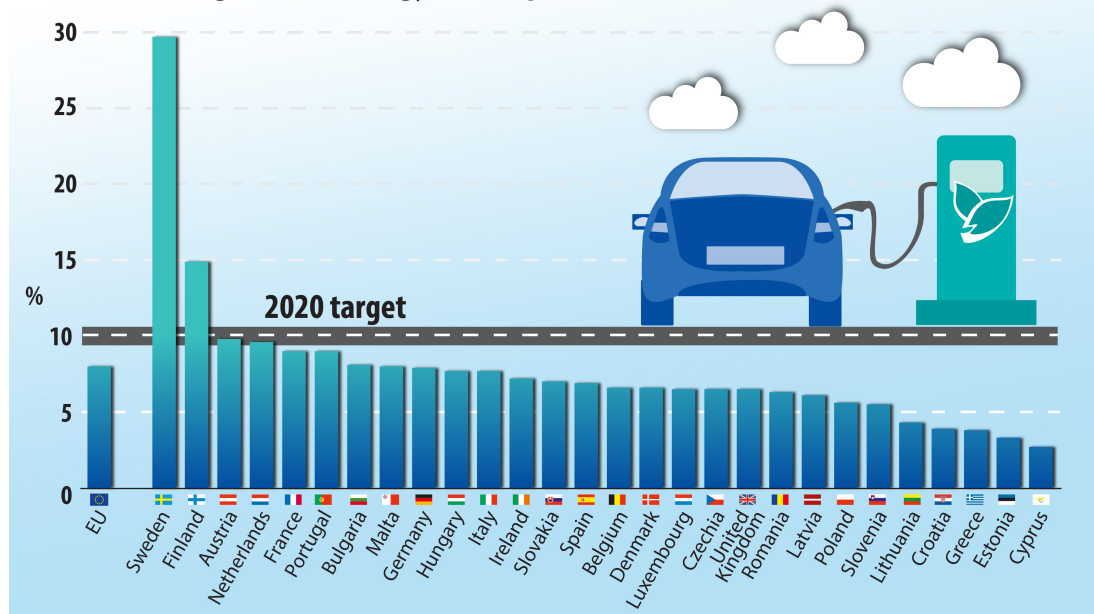
Global biofuel production. Source: IEA



EU Transport mix

- Sweden has the highest share of renewables in transport
- A combination of technologies, pathways, fuels contributed to the success
- Success of Stockholm – no drop of fossil oil in the public transport system for 1 million people
- Key policy – carbon pricing

Share of energy from renewable sources in transport
(2018, in % of gross final energy consumption)



Global biofuel production. Source: Eurostat ec.europa.eu/eurostat

Outlook

- Challenges as well
 - Investments at an all time low due to uncertainty
 - Cities announcements to move towards banning ICE
 - Misinformation and myths hindering progress
- Opportunities
 - New and ambitious biofuel policies in China, India, S E Asia
 - Sector targets for aviation (ICAO/IATA) and maritime (IMO), plus heavy duty



Message to policy makers

1. Bioenergy as essential service
2. A bioenergy future
3. Dis-incentivize fossil fuels
4. Build back better with Bioenergy
5. Time for ambition and action

World Bioenergy Association

Mail: info@worldbioenergy.org

Website: www.worldbioenergy.org

Phone: +46 8 441 70 84

25-06-2020

WORLD BIOENERGY ASSOCIATION

**WBA POSITION ON COVID19:
IMPACTS AND OUTLOOK FOR BIOENERGY**

BIOENERGY AS ESSENTIAL SERVICE. Bioenergy (including solid biomass, liquid biofuels and biogas) has provided clean, on demand energy and its role in meeting end use of electricity, heating and transport fuels should be recognized as essential product and service in times of crisis.

A BIOENERGY FUTURE. Policy makers should assure investors and the wider bioenergy community of their support to bioenergy and its crucial role in reducing fossil fuel use, generating jobs, local economic development and combating climate change.

DIS-INCENTIVIZE FOSSIL FUELS. Low oil prices, low cost of renewable energy sources and the momentum towards a clean energy future provide the opportunity for policy makers to disincentivize fossil fuels development by eliminating subsidies, implementing carbon pricing policies and developing fossil fuel exit strategies.

BUILD BACK BETTER WITH BIOENERGY. Recognizing the crucial role of bioenergy in the global energy mix, governments should include support to sustainable bioenergy technologies and pathways as key themes at the centre of economic recovery packages. No more fossil fuel support.

TIME FOR AMBITION AND ACTION. Recognizing that we face a climate urgency, national governments must increase their climate ambition by setting long term, ambitious and stable targets for bioenergy and renewable energy.

World Bioenergy Association, Kammatargatan 22, SE 111 40 Stockholm, Sweden
Tel. + 46 (0)8 441 70 84, info@worldbioenergy.org, www.worldbioenergy.org

June 2020

Silver Supporters of WBA

